



iF

Series

ANSI Grade 1

Touchless Smart Lock

Mobile Biometrics Access Control

iF-01 Cylindrical Lock

klacci
life unlocked.

www.klacci.com

This product is covered by one or more patents.

Copyright© 2020 I-TEK Metal Manufacturing. All rights reserved.

iF-01 Cylindrical Lock



Outside View

Your solution for quick and easy installation -

Easily install or retrofit to current door jamb and preparation



Inside View

Brilliant Design and Functionality for Your Every Need

Nothing says more about a product than a flexible one that not only fulfills what it has been designed for but takes it up to a whole new level of convenience and performance.

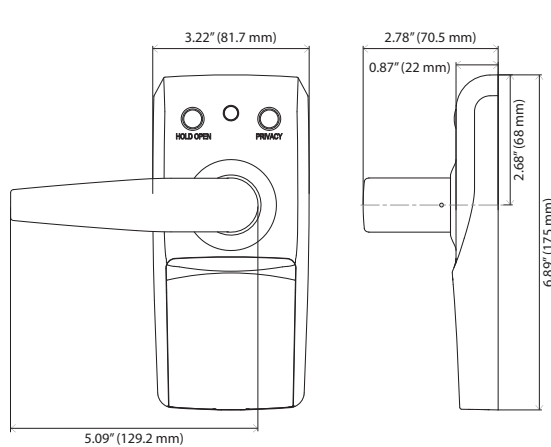
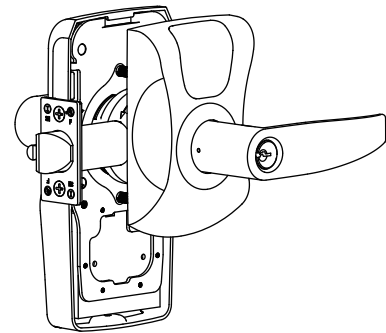
The iF-01 model has been integrated into a standard cylindrical lockset, allowing you to easily retrofit into your existing door preparation, so no additional hole drilling is required. Plus, it's powered by 4 AA alkaline batteries with a lifespan of up to one year, so you can say goodbye to complicated wiring. Installation is easy and fast, which can be done using a few simple tools and completed within a couple of minutes.

Electronic Specifications

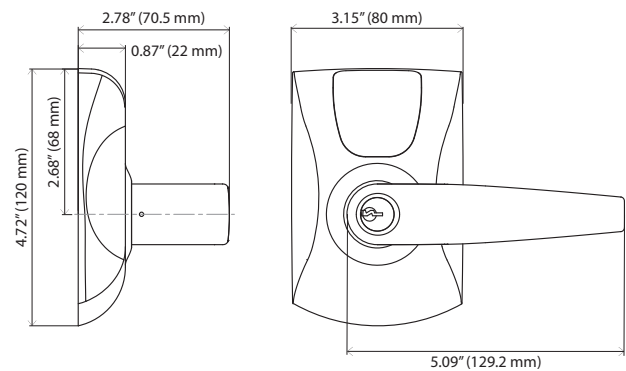
	Battery Type	Low Voltage Type
Required Power/ Control Mode	<ul style="list-style-type: none"> Battery Life: Estimated 1 year or 5000 cycles with 4 AA alkaline batteries. 	<ul style="list-style-type: none"> Power Input: 12 or 24 VDC. 2 Types of Output Options. Energized Circuit (Output = Input; Current: MAX 1.5A). Electrical Circuit (COM, NO/NC).
No. Users	<ul style="list-style-type: none"> Unlimited, dependent on smartphone's memory capacity. 	
Management	<ul style="list-style-type: none"> Can assign secondary administrators for unlimited or 3-5 users using the user management interface. 	
Credential Verification Time	<ul style="list-style-type: none"> <1s (without facial recognition). Note: Depending on the smartphone used, the actual connectivity during operation may differ. 	
Visual Communications	<ul style="list-style-type: none"> LED. 	
Communication Standards	<ul style="list-style-type: none"> Wifi. 3G/4G/5G. Bluetooth 4.0. 	
Encryption	<ul style="list-style-type: none"> AES 256-bit. 	
Communication Range	<ul style="list-style-type: none"> 2m. 	
Wake-Up on Radio	<ul style="list-style-type: none"> 1s by Bluetooth connection or Inside button. 	
Data Rate	<ul style="list-style-type: none"> <100kb via Wifi, 3G/4G/5G. 	
Connectivity Options	<ul style="list-style-type: none"> Web portal management platform (manage authorization, authorization updates, biometric/non-biometric requirement). Wifi access point (real-time communication). Telecom signal (3G/4G/5G) (real-time communication). 	
Non-Biometric/ Biometric Recognition	<ul style="list-style-type: none"> Passcode, fingerprint, facial recognition, IRIS recognition (future feature), voice recognition (future feature). 	
Operating Temperature	<ul style="list-style-type: none"> 0~49 °C. 	
Operating Humidity	<ul style="list-style-type: none"> 85%. 	
Certification/Compliance	<ul style="list-style-type: none"> ANSI/BHMA A156.25 UL294 for Access Control System Units. CAN/ULC-60839 for Electronic Access Control Systems. FCC Part 15 Industry Canada (IC) Certification. 	
Available Status Signals	<ul style="list-style-type: none"> Request-to-exit. Battery status/low battery alert. HOLD OPEN mode (constantly unlocked until reset back to standard mode). PRIVACY mode (all users' access denied until reset back to standard mode or when turning inside lever; administrator can access normally). Communication status. 	
Flexible Solutions	<ul style="list-style-type: none"> Smartphone. Tablet. Web portal via PC. 	
Mobile App	<ul style="list-style-type: none"> Add and configure locks. Add new users and enroll credentials. View users and alerts. Perform lock diagnostics. Requirements: IOS 9 or later Android 4.4 or later. Standard Authentication: Passcode OR the user mobile device's biometric recognition function. Dual Authentication: The standard authentication AND the Smartlink App's facial recognition. User feedback. 	
Web Portal	<ul style="list-style-type: none"> Configure locks. Add new users and enroll credentials. View audits and alerts. Setup facial recognition requirement for access. Preserve for security camera/ online alerts connection port. 	<ul style="list-style-type: none"> Requirements: <ul style="list-style-type: none"> » IE 11.1 or later. » Chrome 38.0 or later. » Firefox 33.0 or later. » Safari for Mac OS X10 or later. » Mobile/tablet browser for Android and iOS.

Mechanical Specifications

iF-01 Cylindrical Lock



Inside View



Outside View

Certification/Compliance	<ul style="list-style-type: none">• UL listed for "A" label (3 hours) single swinging door (4'x8').• Conforms to ANSI/BHMA A156.2 Grade 1 Cylindrical Lock standard.• UL10C Standard for positive pressure fire tests of door assemblies.
Doors & Preparations	<ul style="list-style-type: none">• ANSI A115.2, through bolted installation.
Backset	<ul style="list-style-type: none">• 2-3/4" (70mm) standard, 2-3/8" (60mm), 3-3/4" (95mm) and 5" (127mm) optional.
Door Thickness	<ul style="list-style-type: none">• Standard 1-1/2" (38mm) ~ 2" (50.8mm) wood or metal door.• Please consult factory for thicker door availabilities.
Latchbolt	<ul style="list-style-type: none">• 1/2" (12.5mm) throw, UL listed, faceplate self-adjusted, 3/4" (19mm) throw fire door deadlatch available.
Handing	<ul style="list-style-type: none">• Non-handed.
Strike	<ul style="list-style-type: none">• ANSI strike standard, T-strike or Full lip strike optional.
Cylinder	<ul style="list-style-type: none">• 6-pin "C" keyway standard, nickel silver keys, compatible with Schlage® original cylinder.
I/C Core	<ul style="list-style-type: none">• SFIC: 6 or 7-pin, compatible with Best® and Falcon® original cylinder.• FSIC: 6-pin, compatible with Schlage® original cylinder.
Trim	<ul style="list-style-type: none">• Solid zinc diecast, concealed screws.
Master Keying	<ul style="list-style-type: none">• Can be masterkeyed or grand masterkeyed. Construction key systems available.

Miscellaneous

Cylindrical Lock Miscellaneous

Trims

Made of high-quality zinc alloy and available in wide range of finishes.



D



Q



A

Note: Roses are not included in iF-01 models.

Knurled Lever

Grooves are machined onto the outer lever for an improved grip. Sensory warning for blindness or other safety applications in hazardous area. To order, add prefix KL.

Cylinders

Cylinders are precision built to extremely close tolerances and highest standards of accuracy. Made of solid brass, these high-precision 6 or 7 pin cylinders offer high security and reliability. Keys are made of white nickel silver. Interchangeable with other manufacturers' cylinders.



Standard Cylinder

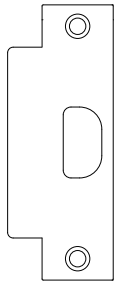


SFIC I/C Core



FSIC I/C Core

Strikes

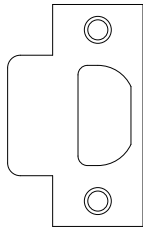


D27

ANSI Strike

4-7/8" × 1-1/4" (123.8mm × 31.8mm)

Lip length 1-3/16" (30.2mm)

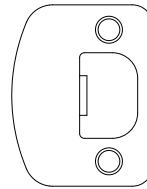
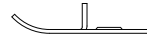


B27

T-Strike

2-3/4" × 1-1/8" (70mm × 28.6mm)

Lip length 1-1/8" (28.6mm)



CR27

Full Lip 1/4" Radius Corner Strike

2-1/4" × 1-3/4" (57.2mm × 44.5mm)

Lip length 1-3/16" (30.2mm)

Finishes

A wide selection of finishes are available to match with your door and other hardware.



605 (US3)

Polished Brass



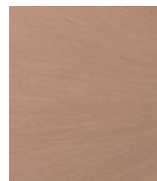
606 (US4)

Satin Brass



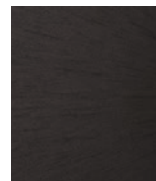
611 (US9)

Polished Bronze



612 (US10)

Satin Bronze



613 (US10B)

Dark Oxidized
Satin Bronze



625 (US26)

Polished
Chrome



626 (US26D)

Satin Chrome



Safe to Touch

Why Anti-Microbial?

Every day we touch things that reside germs, bacterial and viruses. In fact, the touching surface of door hardware in high traffic and public use areas fabricates a perfect environment for harmful microbial to cultivate. Infections of the harmful microbial have becoming a rising public safety concern especially in sensitive industries, such as healthcare facilities and educational institutions.

What is Anti-Microbial?

Studies found that germs, bacterial and viruses can thrive from hours to days on surfaces like stainless steel or any other type of metals. The anti-microbial coating applied on the frequent touch surface of a door hardware which can slow or inhibit the growth of bacteria making the environment safer for everyone. The Anti-Microbial option are offered to a wide range of Klacci products available with different functions and finishes.

Anti-microbial Coating

An optional anti-microbial coating can be applied. Specially formulated to prevent bacterial growth on door handle surface. Suitable for high-traffic applications in high-sanitary demanding locations. To order, add prefix AC.

Note: The anti-microbial coating is tested in laboratory. It should not be considered as a substitute for proper hand hygiene and other guidelines recommended by The Centers for Disease Control and Prevention (CDC). Klacci makes no representations or guarantees on the effects of the anti-microbial coating when used in different environments.